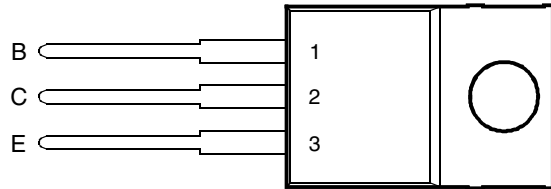


- Designed for Complementary Use with the BD240 Series
- 30 W at 25°C Case Temperature
- 2 A Continuous Collector Current
- 4 A Peak Collector Current
- Customer-Specified Selections Available

TO-220 PACKAGE  
(TOP VIEW)



Pin 2 is in electrical contact with the mounting base.

MDTRACA

**absolute maximum ratings at 25°C case temperature (unless otherwise noted)**

RATING		SYMBOL	VALUE	UNIT
Collector-emitter voltage ( $R_{BE} = 100 \Omega$ )	BD239	$V_{CER}$	55	V
	BD239A		70	
	BD239B		90	
	BD239C		115	
Collector-emitter voltage ( $I_C = 30 \text{ mA}$ )	BD239	$V_{CEO}$	45	V
	BD239A		60	
	BD239B		80	
	BD239C		100	
Emitter-base voltage		$V_{EBO}$	5	V
Continuous collector current		$I_C$	2	A
Peak collector current (see Note 1)		$I_{CM}$	4	A
Continuous base current		$I_B$	0.6	A
Continuous device dissipation at (or below) 25°C case temperature (see Note 2)		$P_{tot}$	30	W
Continuous device dissipation at (or below) 25°C free air temperature (see Note 3)		$P_{tot}$	2	W
Unclamped inductive load energy (see Note 4)		$\frac{1}{2}LI_{C2}$	32	mJ
Operating junction temperature range		$T_j$	-65 to +150	°C
Storage temperature range		$T_{stg}$	-65 to +150	°C
Lead temperature 3.2 mm from case for 10 seconds		$T_L$	250	°C

- NOTES: 1. This value applies for  $t_p \leq 0.3 \text{ ms}$ , duty cycle  $\leq 10\%$ .  
 2. Derate linearly to 150°C case temperature at the rate of 0.24 W/°C.  
 3. Derate linearly to 150°C free air temperature at the rate of 16 mW/°C.  
 4. This rating is based on the capability of the transistor to operate safely in a circuit of:  $L = 20 \text{ mH}$ ,  $I_{B(on)} = 0.4 \text{ A}$ ,  $R_{BE} = 100 \Omega$ ,  $V_{BE(off)} = 0$ ,  $R_S = 0.1 \Omega$ ,  $V_{CC} = 20 \text{ V}$ .

**PRODUCT INFORMATION**

**electrical characteristics at 25°C case temperature**

PARAMETER	TEST CONDITIONS			MIN	TYP	MAX	UNIT
$V_{(BR)CEO}$ Collector-emitter breakdown voltage	$I_C = 30 \text{ mA}$ (see Note 5)	$I_B = 0$	BD239	45			V
			BD239A	60			
			BD239B	80			
			BD239C	100			
$I_{CES}$ Collector-emitter cut-off current	$V_{CE} = 55 \text{ V}$	$V_{BE} = 0$	BD239			0.2	mA
	$V_{CE} = 70 \text{ V}$	$V_{BE} = 0$	BD239A			0.2	
	$V_{CE} = 90 \text{ V}$	$V_{BE} = 0$	BD239B			0.2	
	$V_{CE} = 115 \text{ V}$	$V_{BE} = 0$	BD239C			0.2	
$I_{CEO}$ Collector cut-off current	$V_{CE} = 30 \text{ V}$	$I_B = 0$	BD239/239A			0.3	mA
	$V_{CE} = 60 \text{ V}$	$I_B = 0$	BD239B/239C			0.3	
$I_{EBO}$ Emitter cut-off current	$V_{EB} = 5 \text{ V}$	$I_C = 0$				1	$\mu\text{A}$
$h_{FE}$ Forward current transfer ratio	$V_{CE} = 4 \text{ V}$	$I_C = 0.2 \text{ A}$	(see Notes 5 and 6)	40			
	$V_{CE} = 4 \text{ V}$	$I_C = 1 \text{ A}$		15			
$V_{CE(sat)}$ Collector-emitter saturation voltage	$I_B = 0.2 \text{ A}$	$I_C = 1 \text{ A}$	(see Notes 5 and 6)			0.7	V
$V_{BE}$ Base-emitter voltage	$V_{CE} = 4 \text{ V}$	$I_C = 1 \text{ A}$	(see Notes 5 and 6)			1.3	V
$h_{fe}$ Small signal forward current transfer ratio	$V_{CE} = 10 \text{ V}$	$I_C = 0.2 \text{ A}$	$f = 1 \text{ kHz}$	20			
$ h_{fe} $ Small signal forward current transfer ratio	$V_{CE} = 10 \text{ V}$	$I_C = 0.2 \text{ A}$	$f = 1 \text{ MHz}$	3			

NOTES: 5. These parameters must be measured using pulse techniques,  $t_p = 300 \mu\text{s}$ , duty cycle  $\leq 2\%$ .

6. These parameters must be measured using voltage-sensing contacts, separate from the current carrying contacts.

**thermal characteristics**

PARAMETER	MIN	TYP	MAX	UNIT
$R_{\theta JC}$ Junction to case thermal resistance			4.17	$^{\circ}\text{C}/\text{W}$
$R_{\theta JA}$ Junction to free air thermal resistance			62.5	$^{\circ}\text{C}/\text{W}$

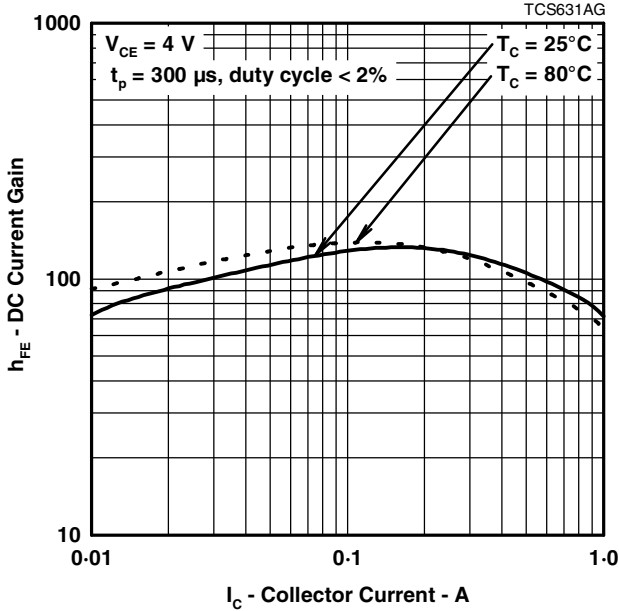
**resistive-load-switching characteristics at 25°C case temperature**

PARAMETER	TEST CONDITIONS †			MIN	TYP	MAX	UNIT
$t_{on}$ Turn-on time	$I_C = 200 \text{ mA}$	$I_{B(on)} = 20 \text{ mA}$	$I_{B(off)} = -20 \text{ mA}$		0.3		$\mu\text{s}$
$t_{off}$ Turn-off time				$V_{BE(off)} = -3.4 \text{ V}$	$R_L = 150 \Omega$	$t_p = 20 \mu\text{s}$ , dc $\leq 2\%$	

† Voltage and current values shown are nominal; exact values vary slightly with transistor parameters.

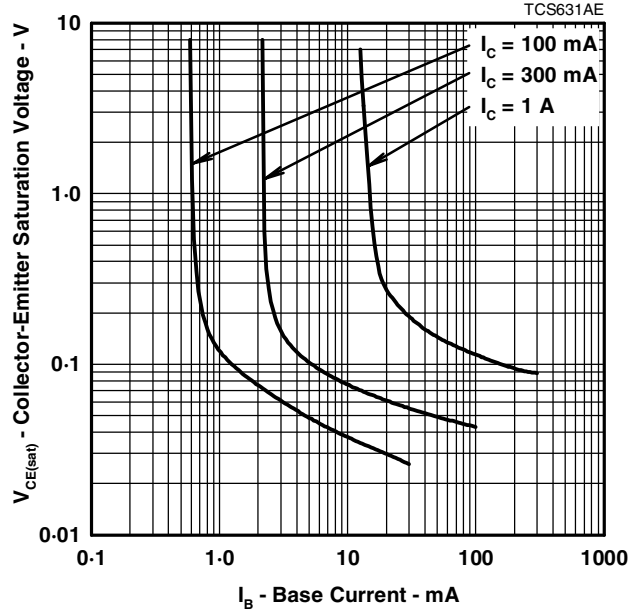
**TYPICAL CHARACTERISTICS**

**TYPICAL DC CURRENT GAIN  
VS  
COLLECTOR CURRENT**



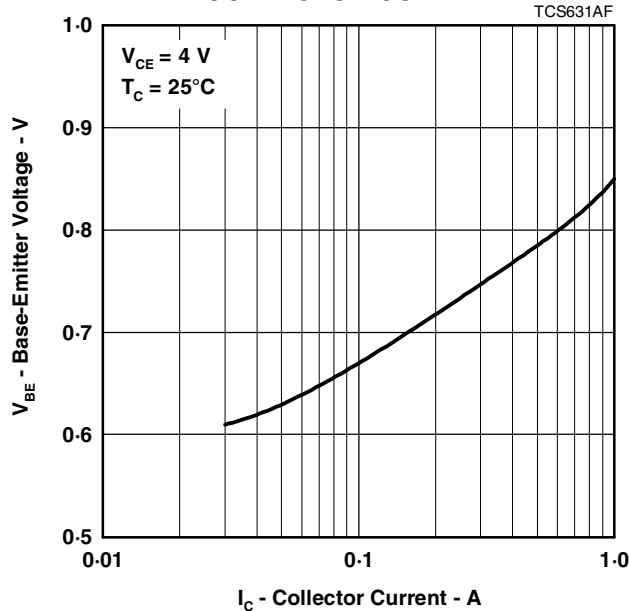
**Figure 1.**

**COLLECTOR-EMITTER SATURATION VOLTAGE  
VS  
BASE CURRENT**



**Figure 2.**

**BASE-EMITTER VOLTAGE  
VS  
COLLECTOR CURRENT**



**Figure 3.**

**PRODUCT INFORMATION**

**MAXIMUM SAFE OPERATING REGIONS**

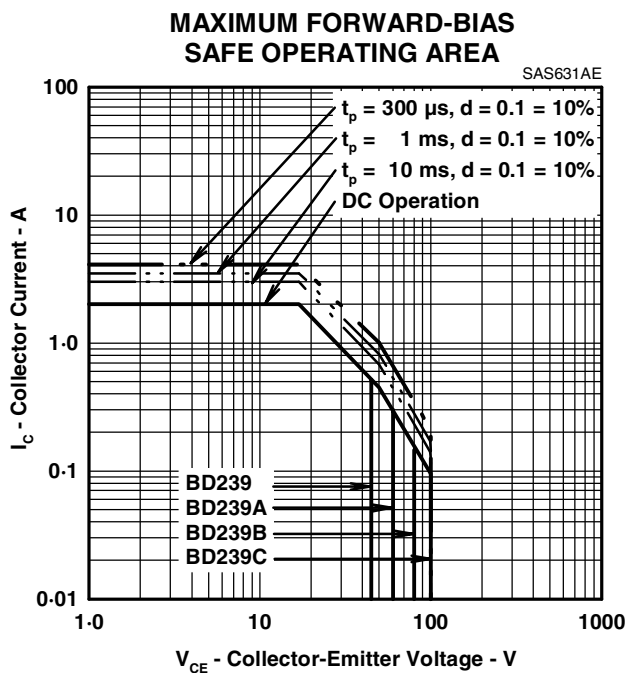


Figure 4.

**THERMAL INFORMATION**

**MAXIMUM POWER DISSIPATION  
vs  
CASE TEMPERATURE**

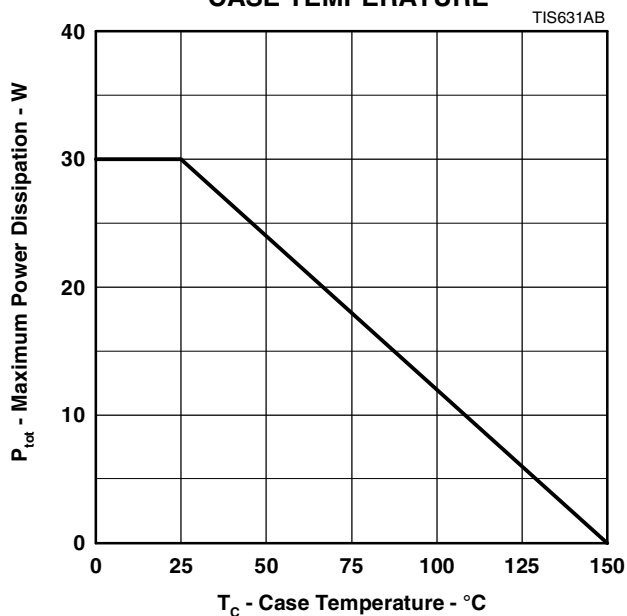


Figure 5.

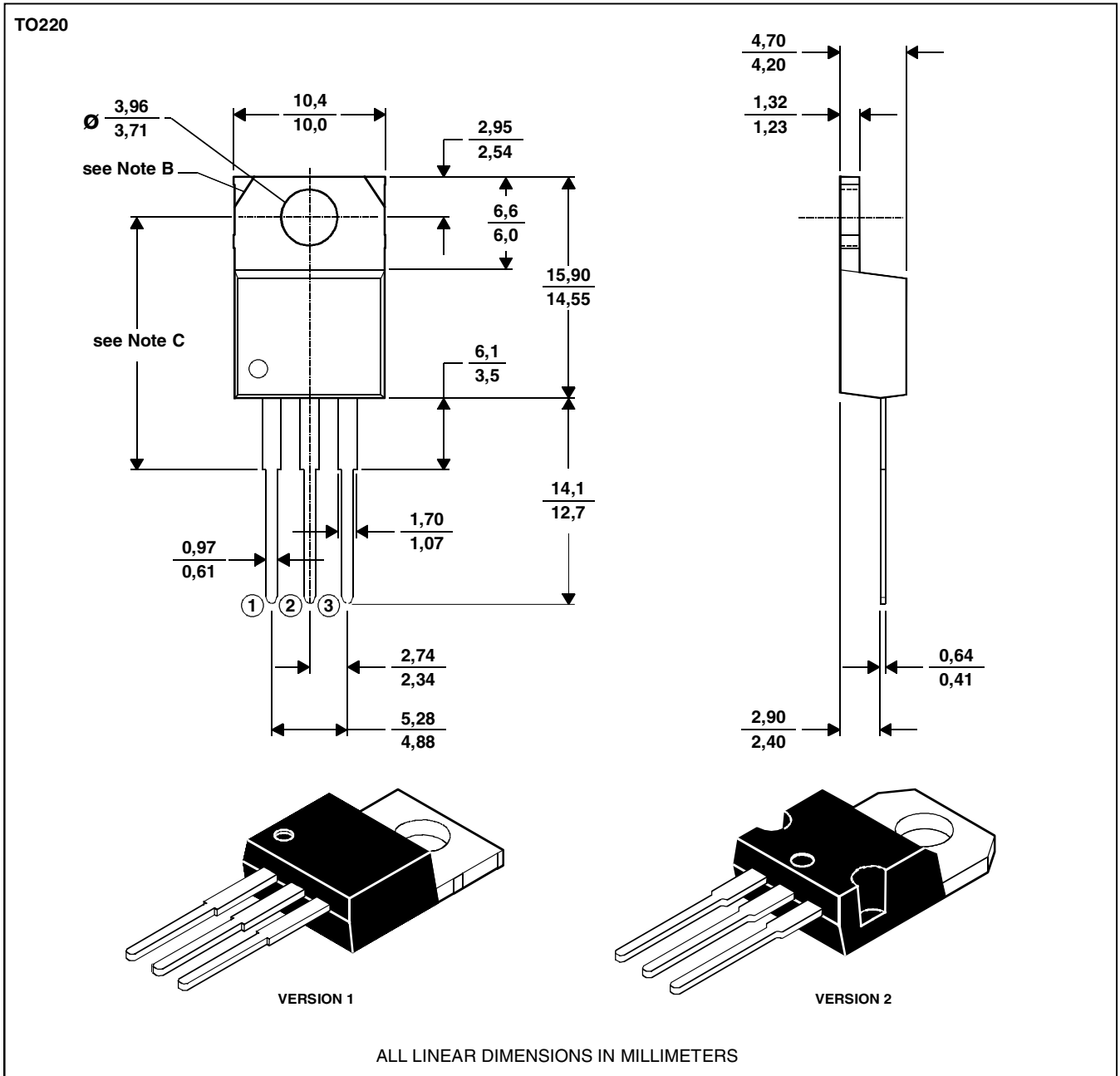
**PRODUCT INFORMATION**

**MECHANICAL DATA**

**TO-220**

**3-pin plastic flange-mount package**

This single-in-line package consists of a circuit mounted on a lead frame and encapsulated within a plastic compound. The compound will withstand soldering temperature with no deformation, and circuit performance characteristics will remain stable when operated in high humidity conditions. Leads require no additional cleaning or processing when used in soldered assembly.



NOTES: A. The centre pin is in electrical contact with the mounting tab.  
 B. Mounting tab corner profile according to package version.  
 C. Typical fixing hole centre stand off height according to package version.  
 Version 1, 18.0 mm. Version 2, 17.6 mm.

MDXXBE

**PRODUCT INFORMATION**

JUNE 1973 - REVISED SEPTEMBER 2002  
 Specifications are subject to change without notice.